



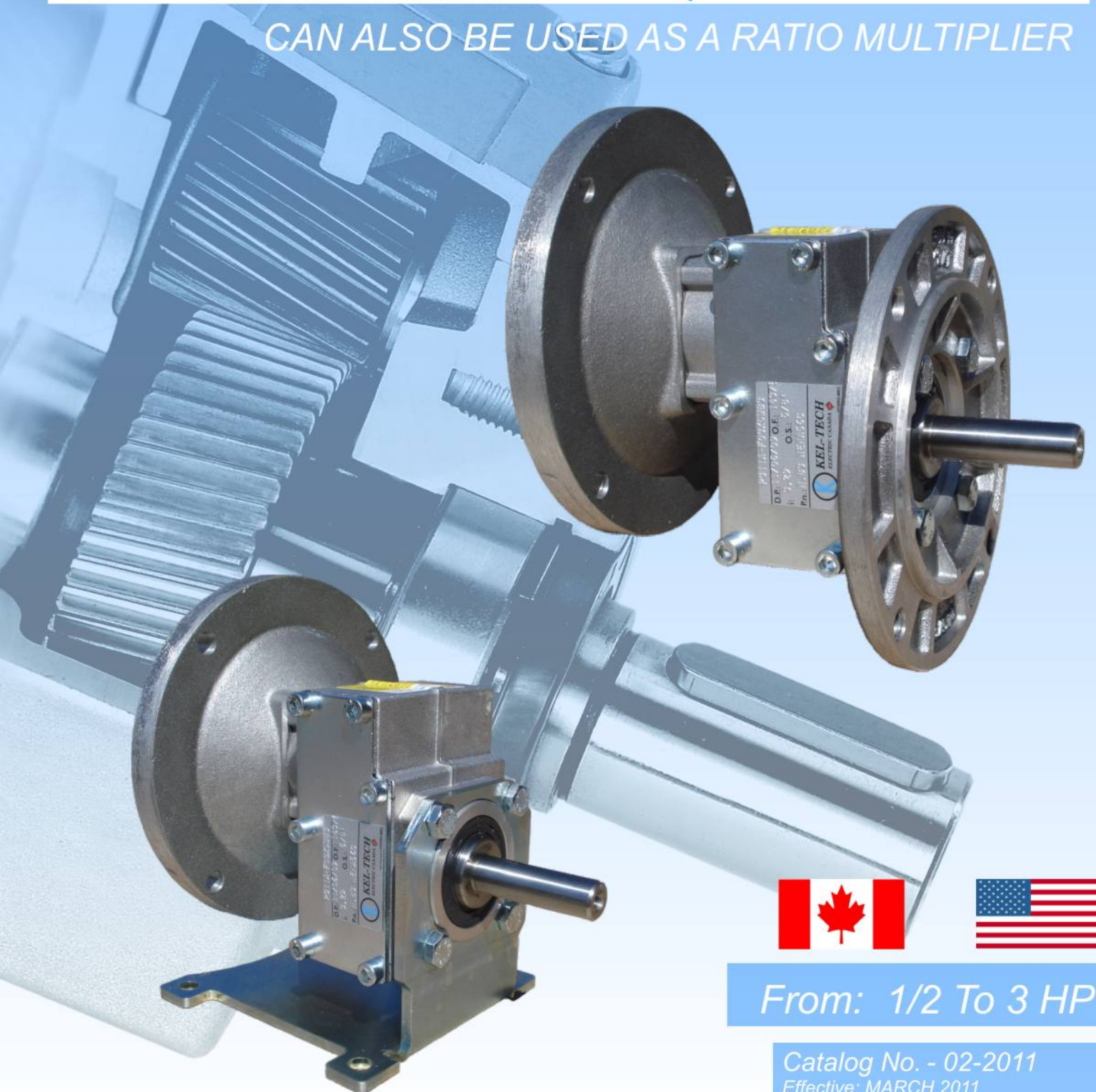
**KEL-TECH**

**ELECTRIC CANADA LTD**



# Inline Gear-Reducers

CAN ALSO BE USED AS A RATIO MULTIPLIER



From: 1/2 To 3 HP

Catalog No. - 02-2011  
Effective: MARCH 2011

# ALUMINUM INLINE GEAR REDUCERS

## Alloy Housing

is vacuum impregnated (MIL-STD 276) for protection and sealing. No secondary finish required but readily accepts paint.

## Flange

Nema C flange standard also available in IEC for compact integrated motor.

## Gears

Hardened and ground gears.

## Removable inspection cover

Allows periodic inspection of gearing during routine maintenance

## Output Shaft

With well proportioned bearings

## Feet

Removable feet. For use as an inline reducer

## Single-piece aluminum alloy housing

Combines light weight with high tensile strength. Precision machined for alignment of bearings and gearing

With the optional feet kit this product works as a stand alone inline reducer

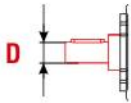
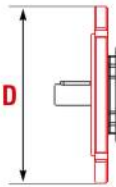
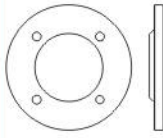
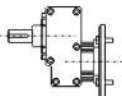
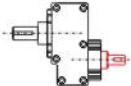
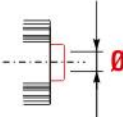
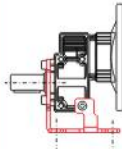
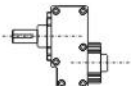


Or add it to one of our right angle aluminum reducers to create larger reduction ratios, and slower output speeds



# HOW TO ORDER

Typical Product Code

P	411A	F	1.57	X	U	W	B3
Input Style	Reducer Type/Size	Mounting	Ratio	Output Shaft Diameter	Output Flange Diameter	Input Fl. NEMA Frame Size	Mounting Position
Motorized M	411A 511A	Output Flange Mounted -F	See technical data table				See technical data table
Predisposed P		Without Flange Feet -N		411A X = Dia 0.625"	N = Without Flange	W = Nema 56C X = Nema 143-5TC Y = Nema 182-4TC	
Type "R" R				511A Y = Dia 1.125"	411A U = Nema 143/5TC	Input Bore NEMA	
		Feet Mounted H1		511A U = Nema 143/5TC W = Nema 182/4TC		K = Without Flange ø5/8"	
Modular Base B						N = Without Flange ø5/8"	
						S = Without Flange ø1 1/8"	



### QUICK SELECTION - Input RPM 1750 \* Available motor flanges

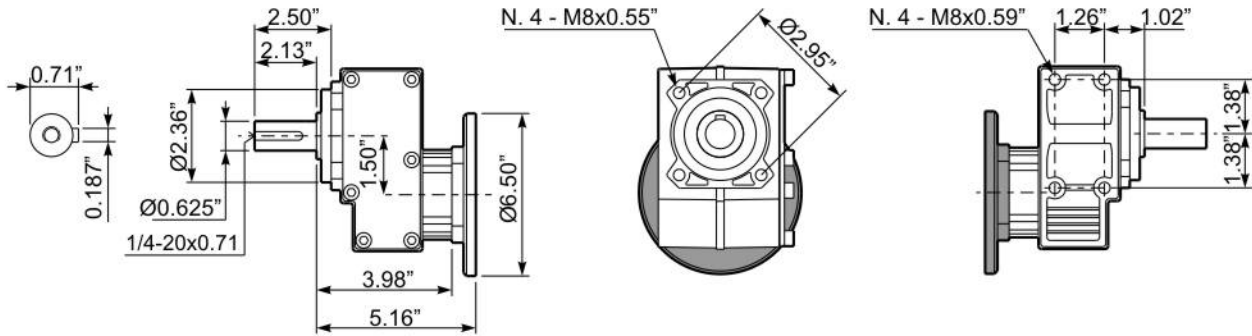
Type	Output Speed (RPM)	Ratio	Input HP	Output Torque [In.Lbs]	Service factor	Available NEMA motor flanges		Type
						W	X	
						56C	143/5TC	
<b>411A</b>	1113.6	<b>1.57</b>	1.5	83	1.2	*	☺	<b>411A</b>
	615.7	<b>2.84</b>	1.5	151	1.1	*	☺	
	531.3	<b>3.29</b>	1.5	174	1.1	*	☺	
	452.6	<b>3.87</b>	1.5	205	1.0	*	☺	
	379.2	<b>4.62</b>	1.5	244	1.0	*	☺	
	277.8	<b>6.30</b>	1	222	1.0	*	☺	
	212.8	<b>8.22</b>	0.50	145	1.3	*	☺	
	161.2	<b>10.86</b>	0.33	127	1.1	*	☺	



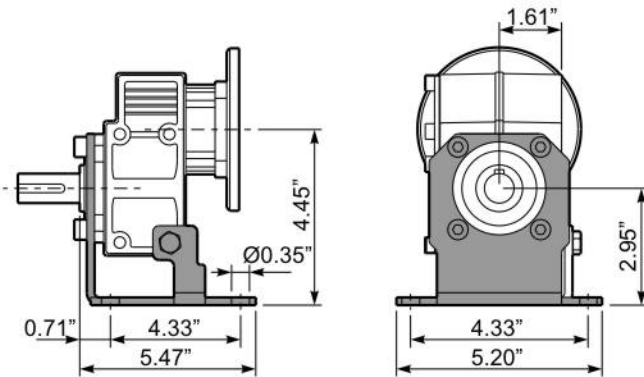
The dynamic efficiency is 0.98 for all ratios

☺ Supplied with Reduction Bushing

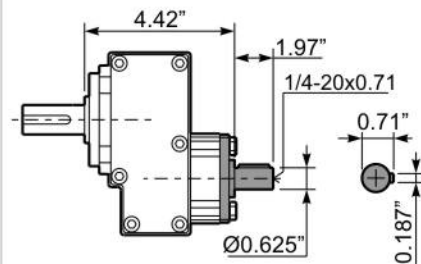
### Standard multiplier dimensions - INCH



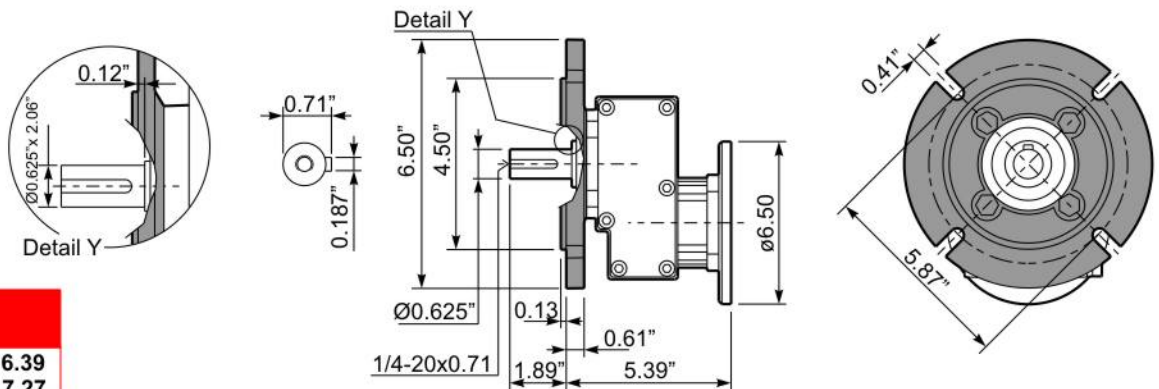
#### With Feet / Base



#### Input Shaft



#### Output Flange



Wormbox weight	Lb.
<b>411A</b>	Mold base <b>6.39</b> With flange <b>7.27</b>



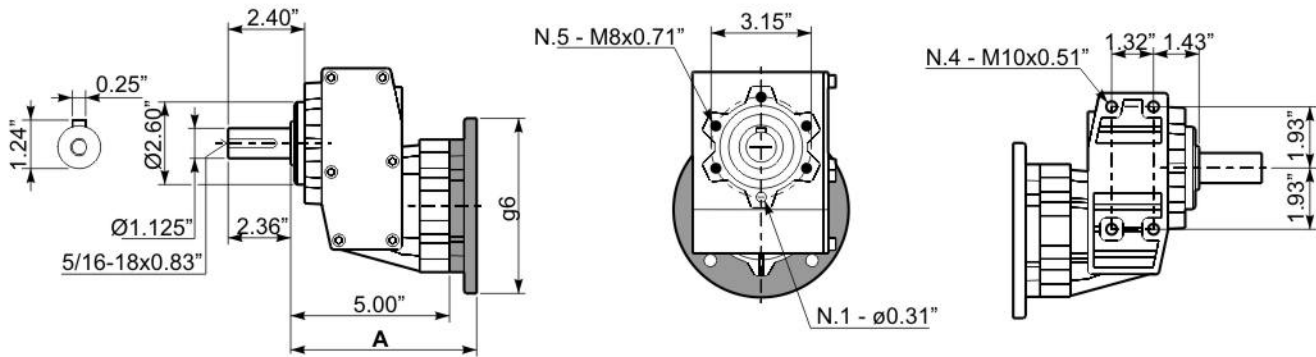
### QUICK SELECTION - Input RPM 1750 \* Available motor flanges

Type	Output Speed (RPM)	Ratio	Input HP	Output Torque [In.Lbs]	Service factor	Available NEMA motor flanges		Type
						X	Y	
						143/5TC	182/4TC	
<b>511A</b>	1346.2	<b>1.30</b>	3	138	1.4	*	*	<b>511A</b>
	714.3	<b>2.45</b>	3	259	1.3	*	*	
	528.3	<b>3.31</b>	3	351	1.3	*	*	
	406.3	<b>4.31</b>	2	304	1.8	*	*	
	331.9	<b>5.27</b>	2	372	1.5	*	*	
	229.5	<b>7.63</b>	1.5	404	1.3	*	*	
	166.7	<b>10.50</b>	1	371	1.1	*	*	

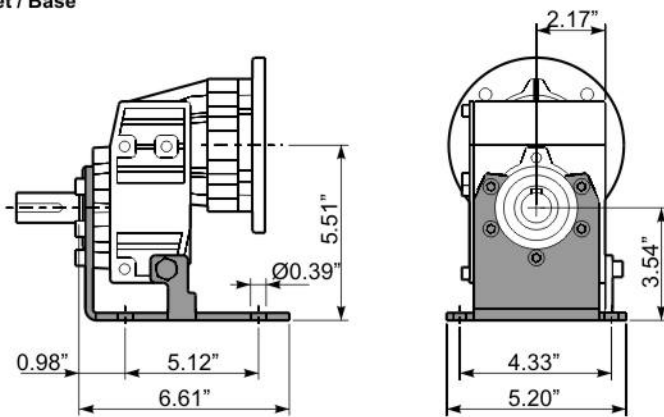


The dynamic efficiency is **0.98** for all ratios \* Available upon request

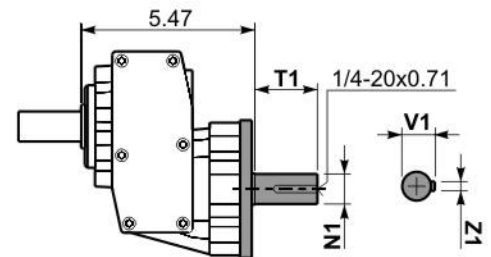
### Standard multiplier dimensions - INCH



### With Feet / Base

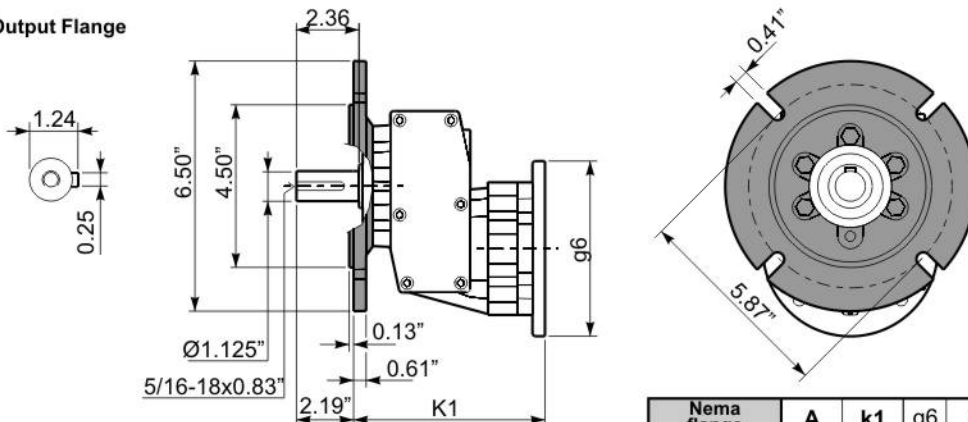


### Input Shaft



Input shaft	N1	T1	V1	Z1	kit code
Standard	1.125	1.97	1.24	0.250	KC505071U
On request	0.875	1.97	0.96	0.250	KC505070U

### Output Flange

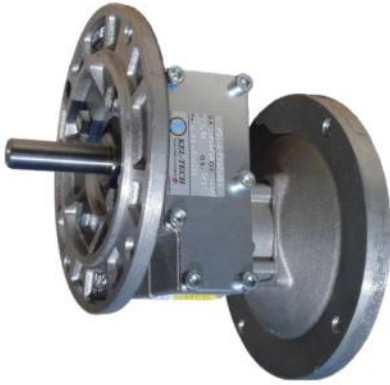


Nema flange	A	k1	g6	kit code
143/5TC	5.96	6.15	6.50	Ku0854041
182/4TC	6.66	6.84	8.88	Ku0854042

Wormbox weight	Lb.
<b>511A</b>	Mold base <b>10.8</b> With flange <b>12.8</b>



This one multifunction reducer can be used in a variety of different applications



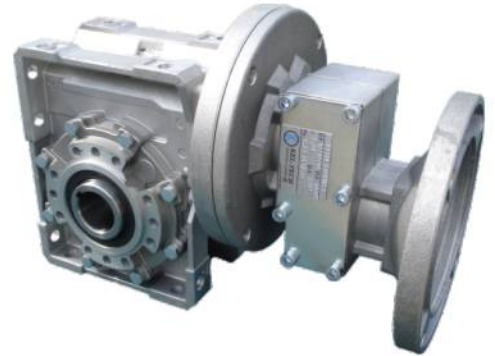
**Flange mounted inline reducer**

- Compact paint free design
- Mounts in any position
- Perfect for mixing and auger applications



**Base mounted inline reducer**

- Nema C-face input design
- Paint Free



**Ratio Multiplier**

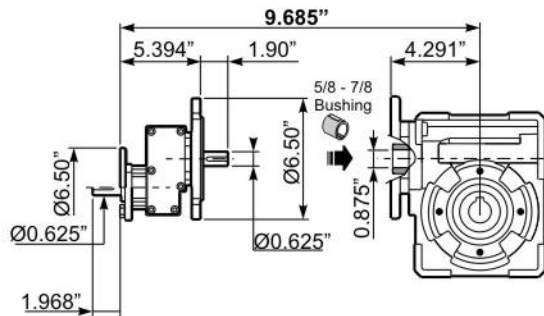
- Combined with a right angle reducer it is capable of achieving high ratio outputs. (Low output RPM's)



**411A + K63A**

Combine the ratio multiplier with our Aluminum reducers to get higher ratios and slower output speeds.

Eg. 411A @ 10.86:1 ratio with K63A @ 94:1 ratio Total ratio is 1020.84:1 With a standard motor of 1800RPM Your new output speed is 1.76RPM



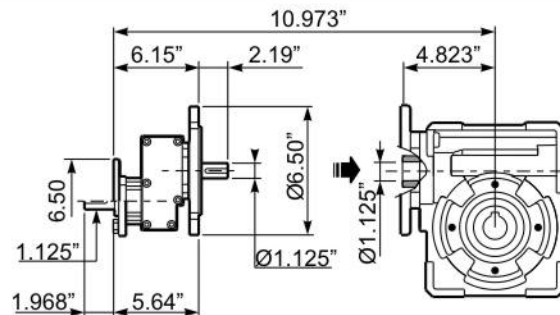
**Further Available Ratios for the 411A Multiplier**

- 1.57
- 2.84
- 3.29
- 3.87
- 4.62
- 6.30
- 8.22
- 10.86

**511A + K85A**

Combine the ratio multiplier with our Aluminum reducers to get higher ratios and slower output speeds.

Eg. 511A @ 5.27:1 ratio with K85A @ 96:1 ratio Total ratio is 506:1 With a standard motor of 1800RPM Your new output speed is 3.5RPM

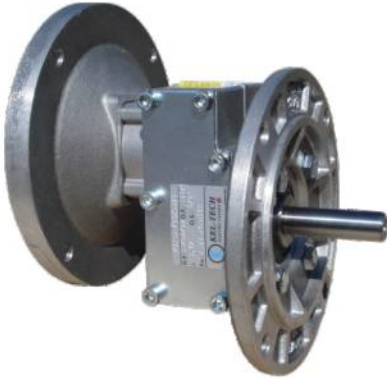


**Further Available Ratios for the 511A Multiplier**

- 1.30
- 2.45
- 3.31
- 4.31
- 5.27
- 7.63
- 10.5



# ALUMINUM INLINE REDUCER / MULTIPLIER LIST PRICING



SIZE	BORE SIZE	INPUT FLANGE	
411A	0.625"	56C	
511A	1.125"	143/5TC	
511A	1.125"	182/4TC	

\* 411A available in 0.875 & 0.75" upon request



# INLINE REDUCER WITH BASE KIT LIST PRICING



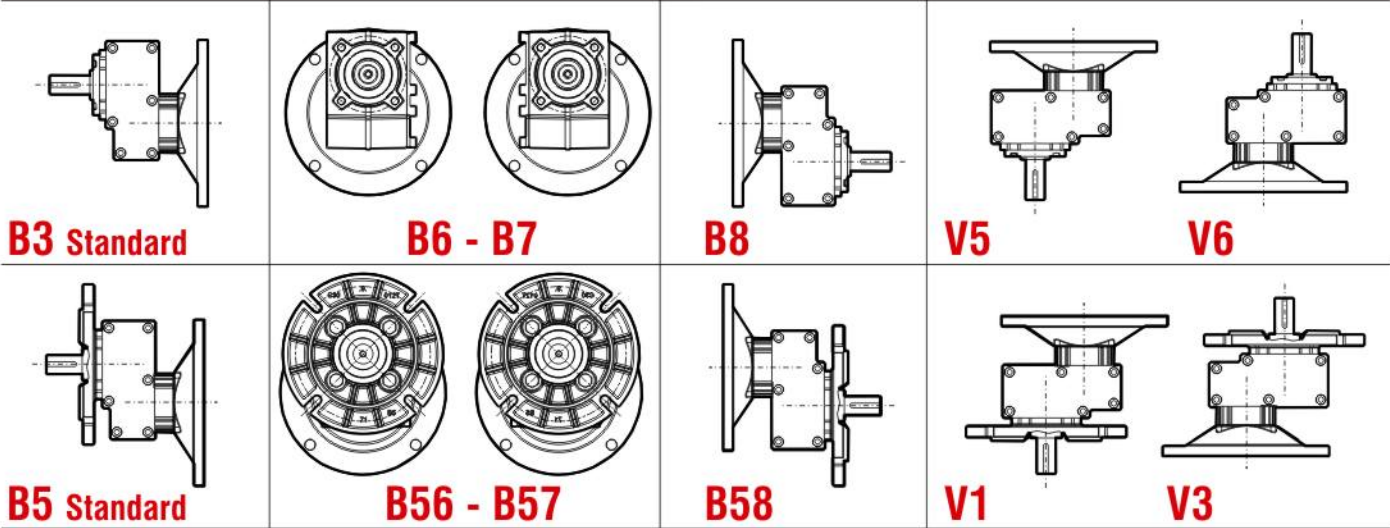
SIZE	BORE SIZE	INPUT FLANGE	LIST PRICE
411A	0.625"	56C	
511A	1.125"	143/5TC	
511A	1.125"	182/4TC	

\* 411A available in 0.875 & 0.75" upon request

Kel-Tech / Hydromec Gearboxes are manufactured in Italy. Using state of the art technology both in design and production, to offer a competitive high-efficiency gearbox suitable for today's market needs.



**Type 411A - 511A Mounting Position**



Oil Capacities for All Mounting Positions in Ounces

Reducer Size:	411A	511A
All the positions	3.53	8.82



Manufactured by :  
**HYDRO-MEC s.r.l.**



**KEL-TECH**  
ELECTRIC CANADA LTD 

1087 Britannia Road East  
Mississauga On. L4W 3X1  
Toll Free: 1-877-279-4123  
Tel. 905-564-7273  
Fax 905-564-7274

[www.kel-techelectric.com](http://www.kel-techelectric.com)